



Aviary House SW1E

£6,000 per month



Aviary House SW1E

£6,000 per month

Modern two bedroom apartment in this boutique development available to rent through Michael Sevilla.

Set on the second floor of Aviary House this stylish apartment covers 948 sq ft comprising a master bedroom with dressing area and ensuite bathroom, second double bedroom with fitted wardrobe and ensuite bathroom, open plan reception with smart fitted kitchen and breakfast bar, and access to private balcony facing Wilfred Street, and guest WC.

The apartment is meticulously finished with an impressive specification and contemporary furniture.

Aviary House benefits from Concierge, communal courtyard and underground parking (separate negotiation).

Located in the historic Birdcage Walk Conservation Area of Westminster close to Victoria tube and St James Park.

Council Tax band: G

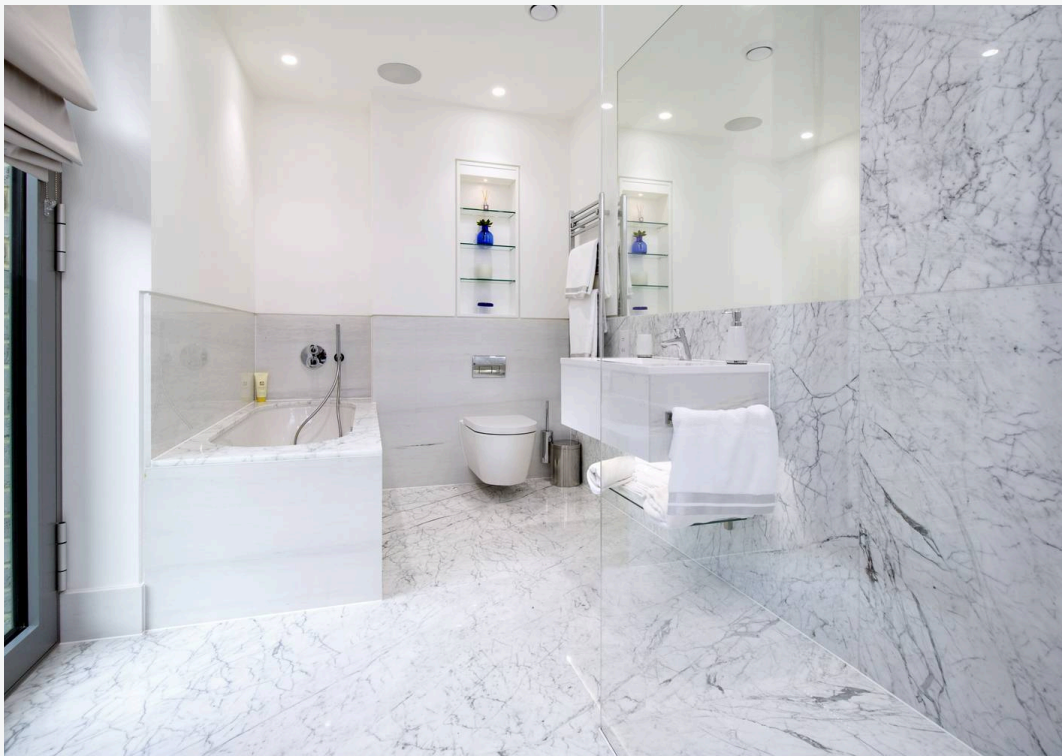
EPC Energy Efficiency Rating: B

EPC Environmental Impact Rating: A

- Comfort Cooling
- Balcony
- Concierge



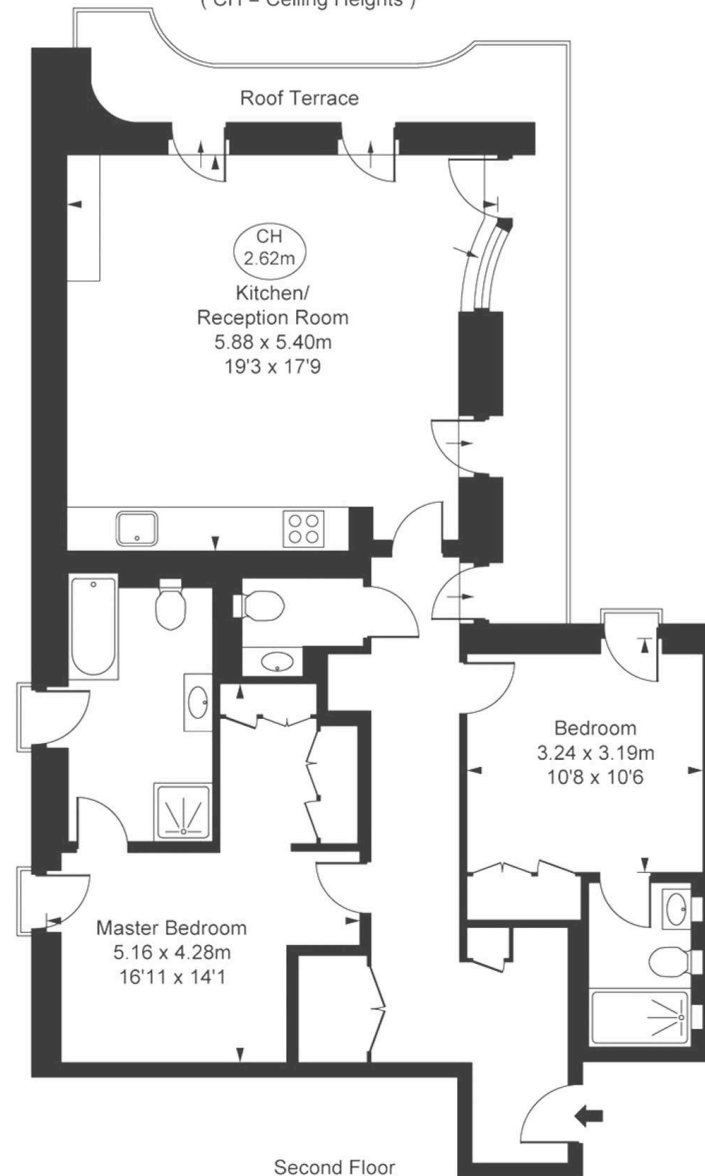




Castle Lane, SW1E
Approximate Gross Internal Area
88.10 sq m / 948 sq ft



(CH = Ceiling Heights)



Second Floor

This plan is not to scale. It is for guidance and not for valuation purposes.
All measurements and areas are approximate only, and have been prepared in accordance with the current edition of the RICS Code of Measuring Practice.
© Fulham Performance

LREO

Contact Agent

Michael Sevilla

+44 (0) 7763 694 543

michael@lreo.co.uk

+44 (0) 20 3348 8000

lreo.co.uk