



823 Finchley Road NW11

Offers in excess of £500,000



823 Finchley Road NW11

Offers in excess of £500,000

Large one bedroom apartment set on the ground floor of this recently constructed private development on Finchley Road available to buy.

This modern apartment offers spacious accommodation covering 856 sq ft comprising a well proportioned bedroom, contemporary bathroom, fully open plan kitchen with integrated Siemens appliances and waterfall edge breakfast bar and a separate utility room.

The development features a residents only gym and CCTV. Located moments from Golders Green (Northern Line) tube, major bus routes and plenty of shops and restaurants.

Council Tax band: D

Tenure: Share of Freehold

EPC Energy Efficiency Rating: B

EPC Environmental Impact Rating: B

- Off Street Parking
- Gym

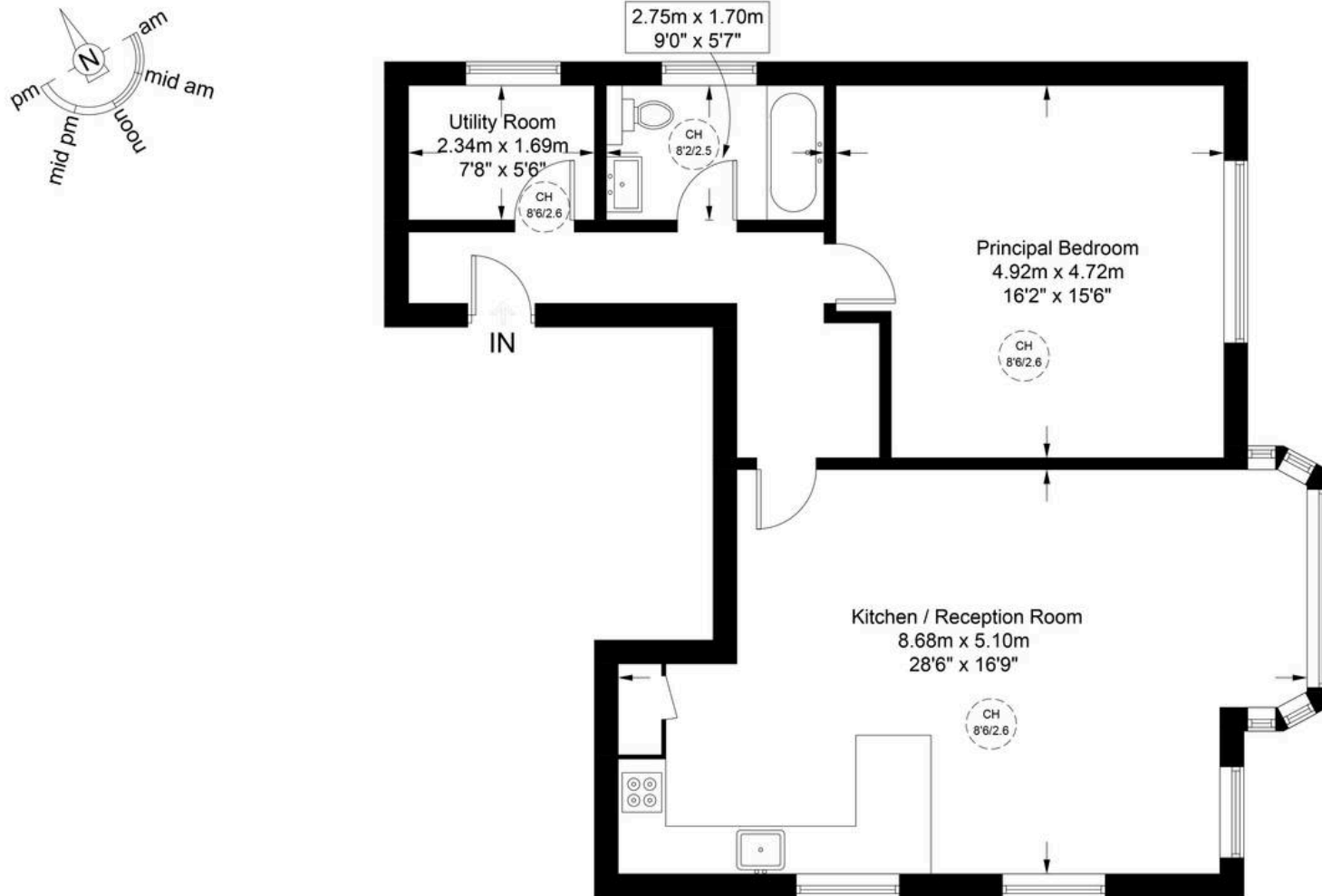






Finchley Road, NW11

Approximate Gross Internal Area = 856 sq ft / 79 sq m



This plan is for layout guidance only and is not drawn to scale unless stated. All dimensions, including windows, doors, and the Total Gross Internal Area (GIA), are approximate. For precise measurements, please consult a qualified architect or surveyor before making any decisions based on this plan.



LREO

Contact Agent

Michael Sevilla

+44 (0) 7763 694 543

michael@lreo.co.uk

+44 (0) 20 3348 8000

lreo.co.uk