



Prince Regent Court, Avenue Road

London

Guide Price £3,395,000



Prince Regent Court

St Johns Wood, London

This apartment must be seen! From the moment you walk in the expanse of the apartment immediately grabs your attention.

Set within a modern building, this sophisticated home welcomes you with a grand entrance hall that leads to a huge reception and dining room with floor to ceiling windows allowing natural light to flood in.

This is an opportunity to acquire a lateral 2576 sq ft 4 bedroom residence in one of London's most desirable enclaves.

The building benefits from 24 hour concierge, secure underground parking and is located seconds from Regents Park.

Council Tax band: H

Tenure: Share of Freehold

EPC Energy Efficiency Rating: B

EPC Environmental Impact Rating: B

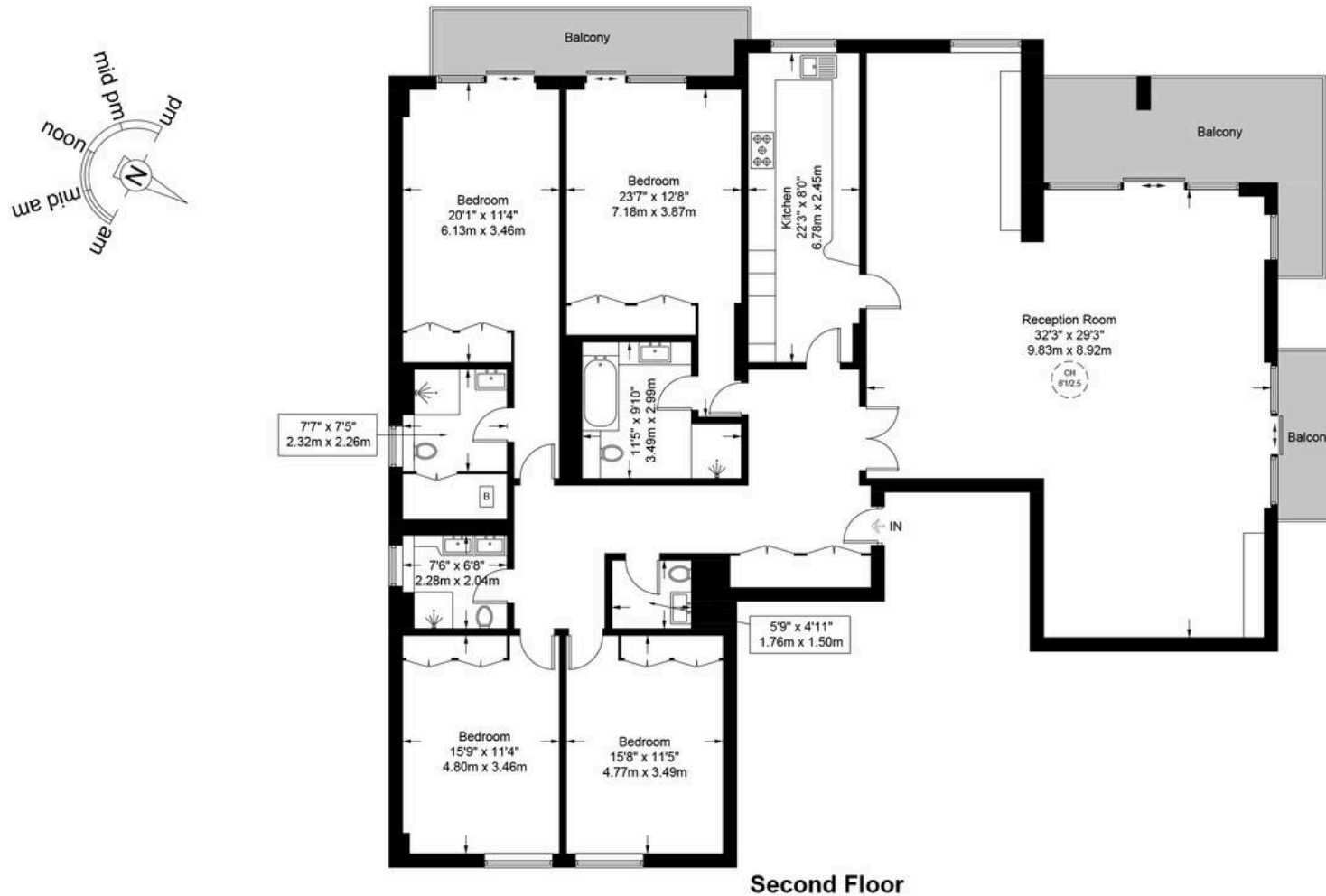






Prince Regent Court, NW8

Approximate Gross Internal Area = 2576 sq ft / 239.3 sq m



This plan is for layout guidance only and is not drawn to scale unless stated. All dimensions, including windows, doors, and the Total Gross Internal Area (GIA), are approximate. For precise measurements, please consult a qualified architect or surveyor before making any decisions based on this plan.



LREO

Contact Agent

Vic Chhabria

+44 (0) 7887 988 000

vic@lreo.co.uk

Contact Agent

Michael Sevilla

+44 (0) 7763 694 543

michael@lreo.co.uk

+44 (0) 20 3348 8000

lreo.co.uk