



The Atrium, Park Road NW8

£7,000 per month



The Atrium, Park Road NW8

£7,000 per month

Luxury apartment set on the fifth floor of this impressive building in The Atrium available to rent through Michael Sevilla.

An impressive two bedroom apartment on Park Road covering 1,227 sq ft. Accommodation comprises two double bedrooms, each with fitted wardrobes and luxury ensuite bathrooms, reception with open plan integrated kitchen, and hallway with storage cupboards and guest WC. The apartment operates a Savant Home System, and has underfloor heating and comfort cooling.

The Atrium is a landmark building in St John's Wood offering residents Concierge and secure underground parking. Located opposite Regents Park and moments from St John's Wood High Street.

Council Tax band: G

Tenure: Leasehold

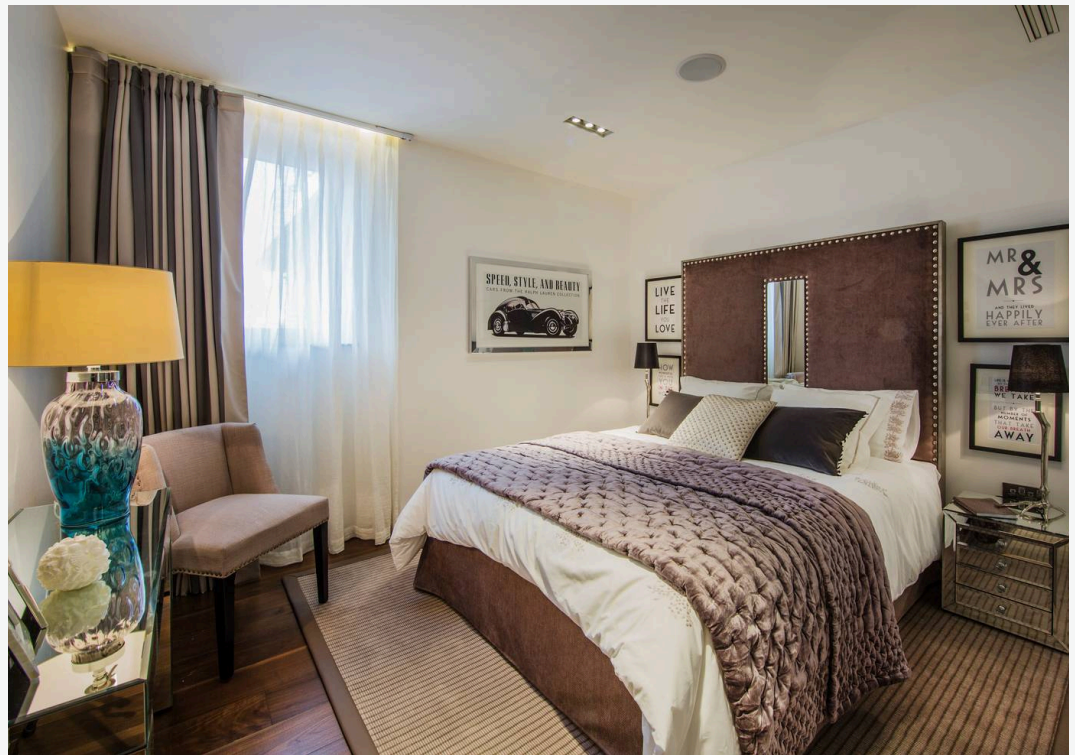
EPC Energy Efficiency Rating: B

EPC Environmental Impact Rating: B

- Comfort Cooling
- Concierge
- Secure Parking







5D Atrium Apartments, 131 Park Road, NW8

Gross internal area (approx.)

114 Sq m (1227 Sq ft)

For identification only, Not to Scale

Floor Plan by **capital group** 020 8671 7722



Fifth Floor

Not to scale, for guidance only and must not be relied upon as a statement of fact. All measurements and areas are approximate only (and have been prepared in accordance with the current edition of the RICS Code of Measuring Practice).

LREO

Contact Agent

Michael Sevilla

+44 (0) 7763 694 543

michael@lreo.co.uk

+44 (0) 20 3348 8000

lreo.co.uk